

Query DMX Channel Values

Sometimes it's useful to check the state of DMX channels..

```
QXXX-YYY[cr]
```

```
QA[cr]
```

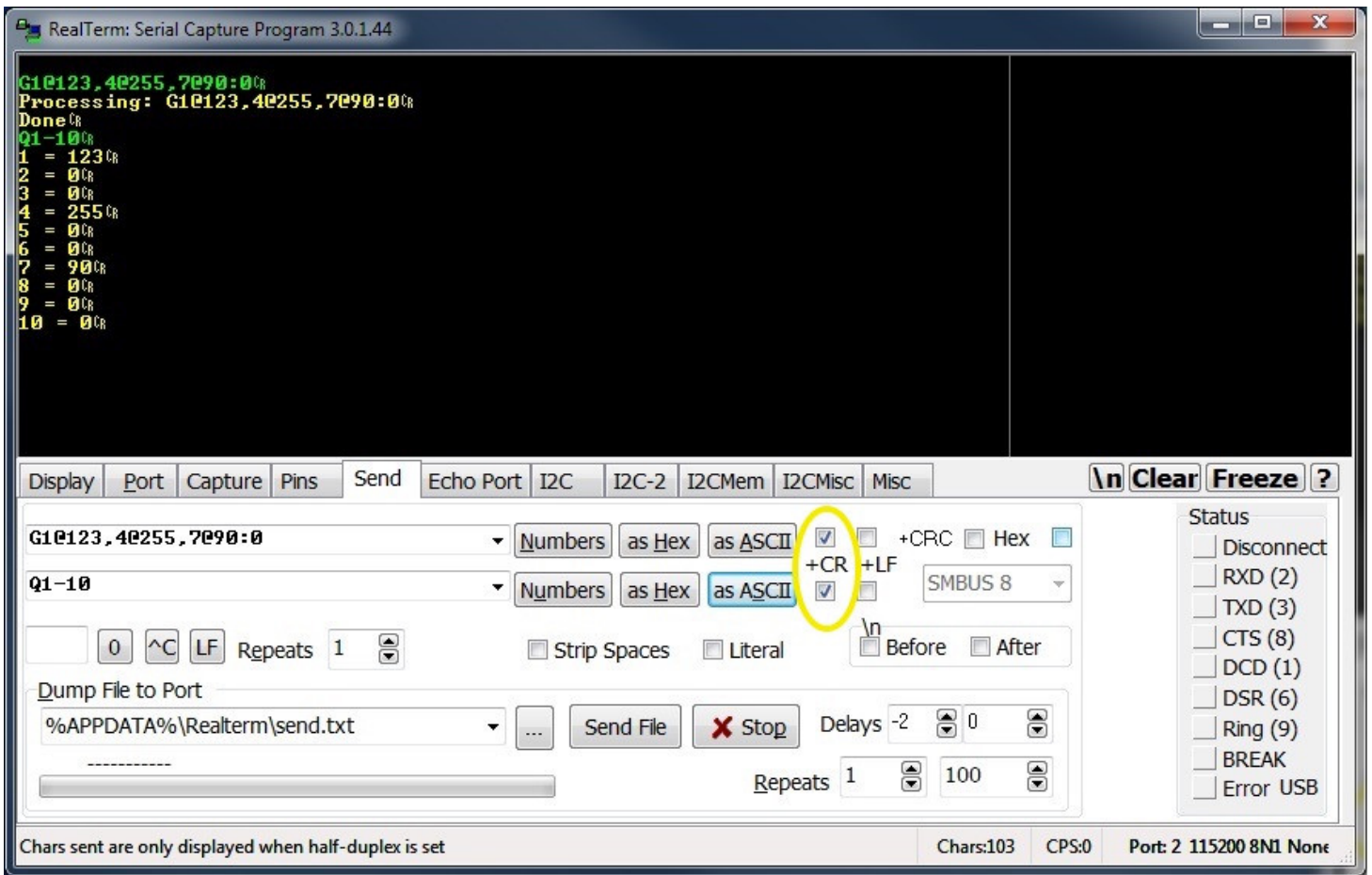
- XXX has the range [1 512]
- YYY has the range [1 512]
- [cr] is the carriage return

```
Q100-100[cr]  <-- Query a single channel
```

```
Q70-35[cr]
```

```
Q35-70[cr]
```

```
QA[cr]  <-- Returns a list of all DMX channel:value combinationsThis can take a while to  
transmit, depending onsystem baud rate.
```



Revision #3

Created Wed, Oct 30, 2019 5:24 PM by ESINC

Updated Wed, Oct 30, 2019 11:01 PM by ESINC